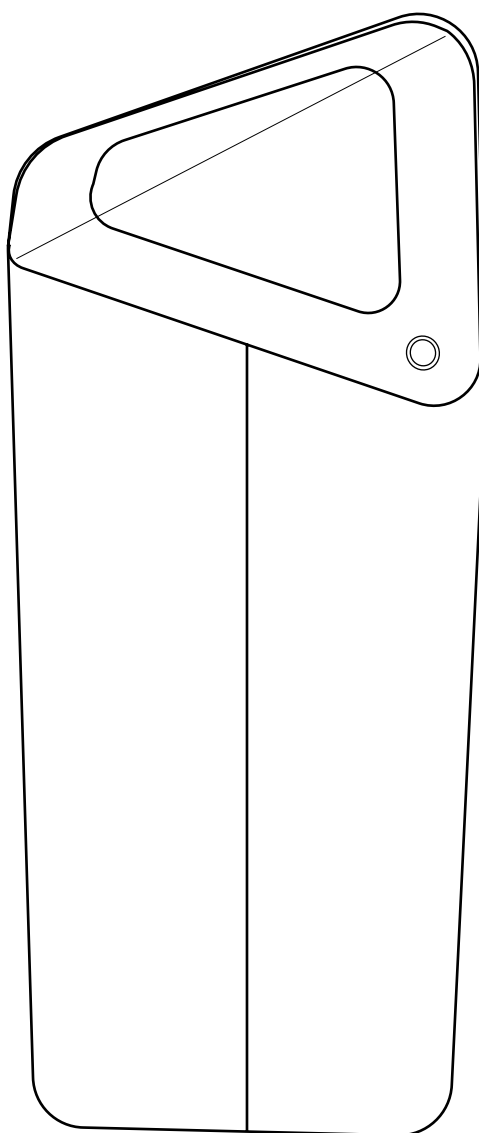
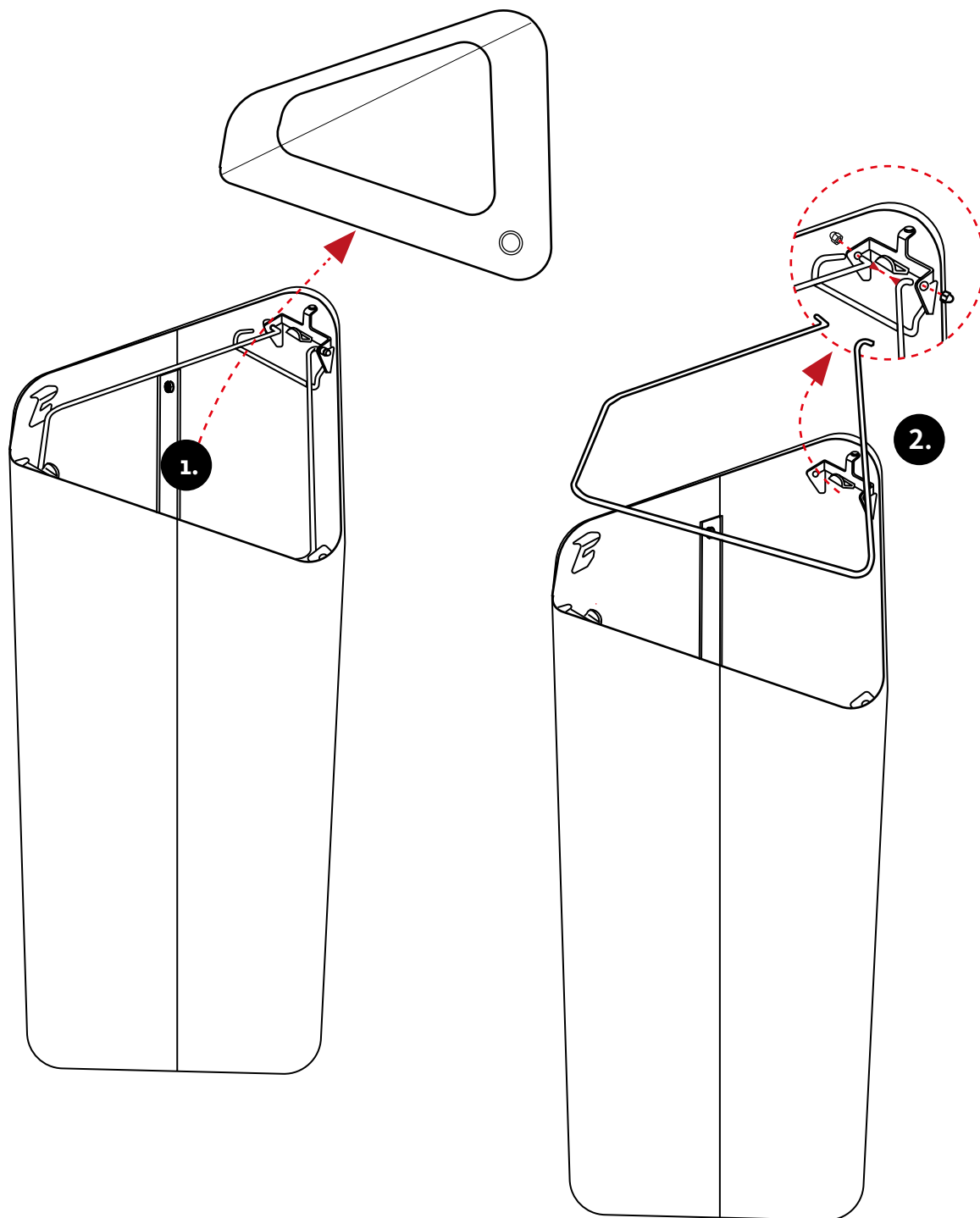


# **WAVY**

## DISASSEMBLY INSTRUCTIONS



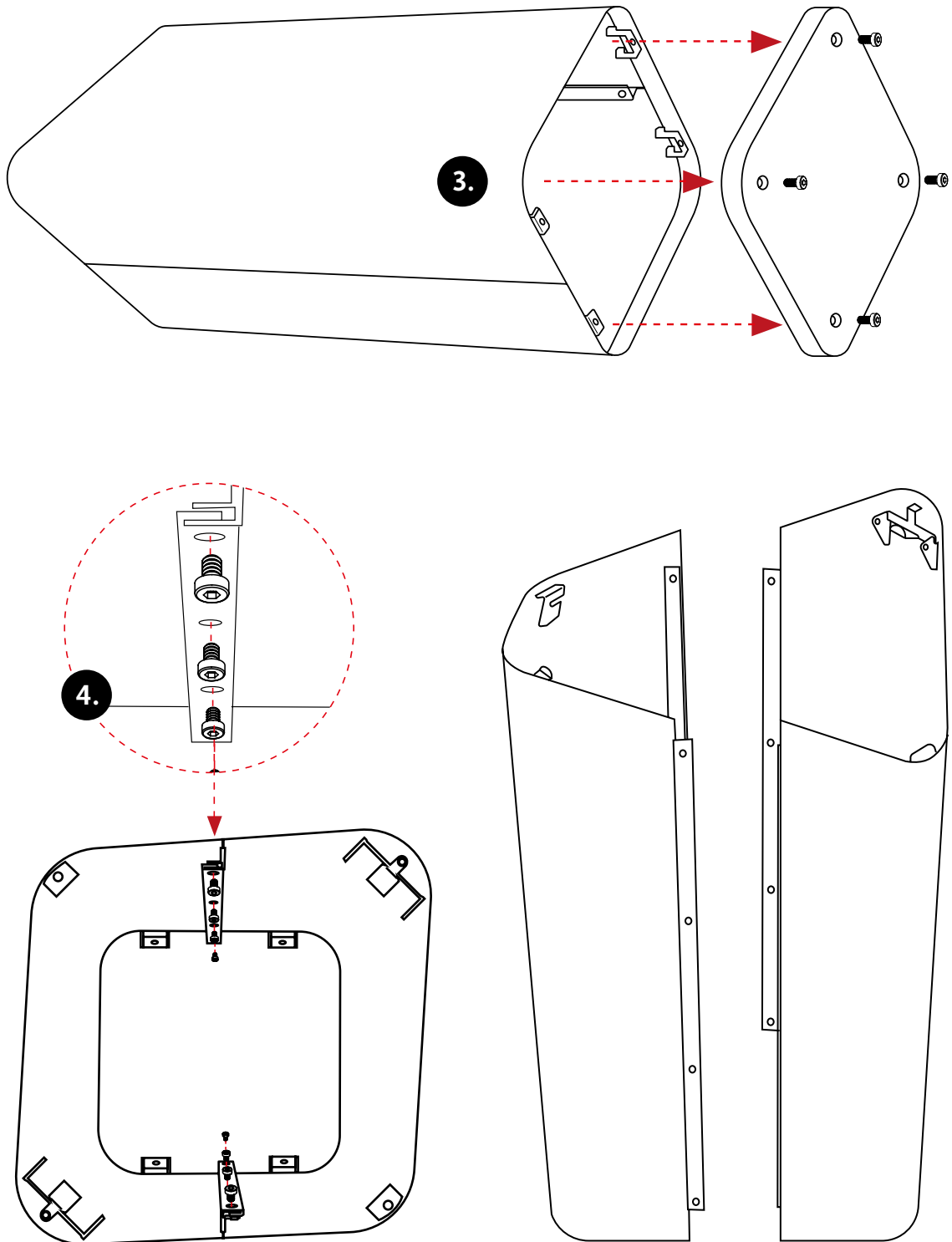
# WAVY



**1.** Unlock possible lock and lift off the top. Lift out the inner container if there is one.

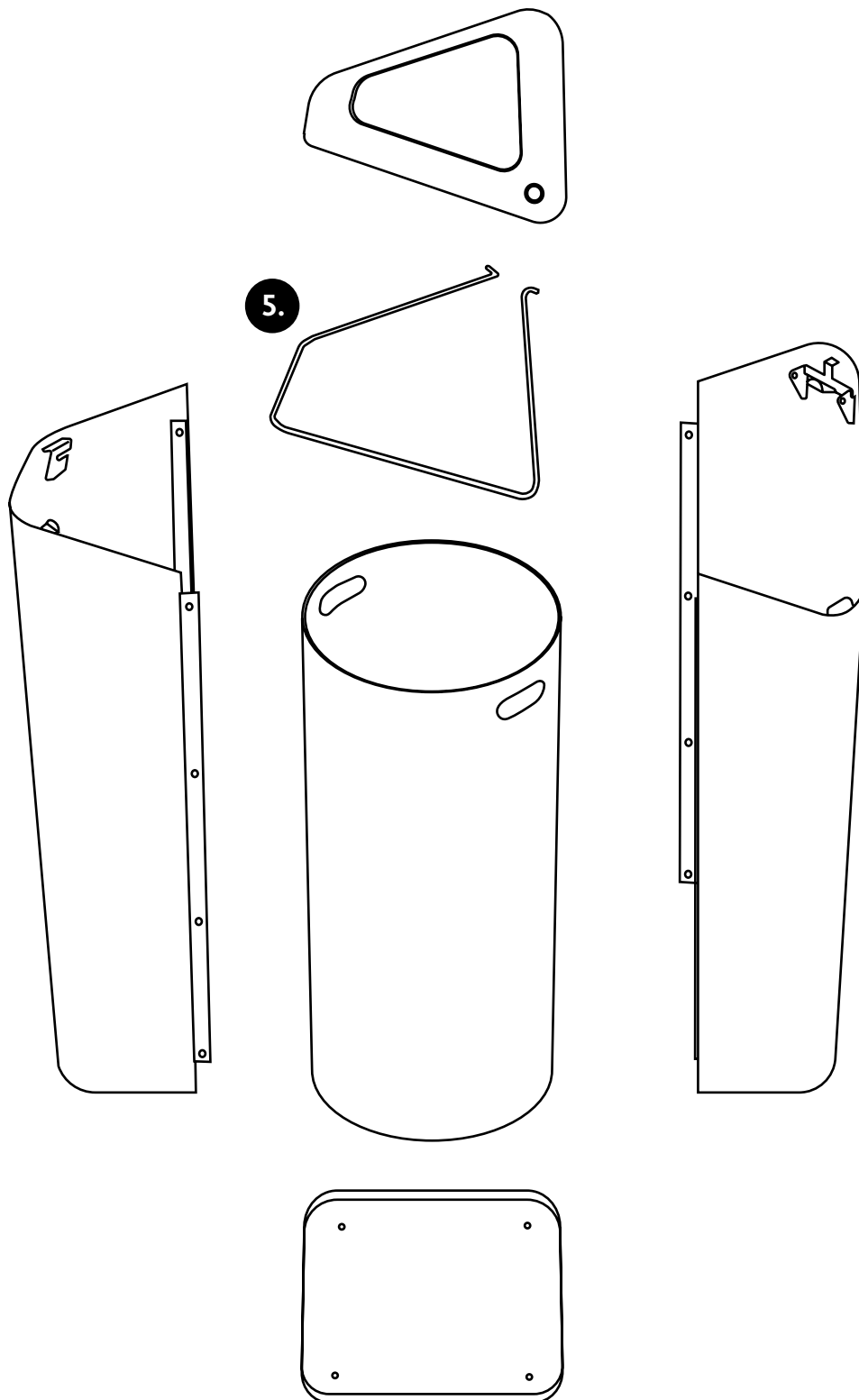
**2.** Remove the sack holder by removing the nuts on both sides.  
Remove the sack holder by pressing it to one side.

# WAVY



3. Lay the Wavy on its side and loosen the screws at the bottom. Remove the bottom plate.
4. Loosen the screws on the inside of the frame. The frame consists of two equal parts.

# WAVY



**5. Done.**