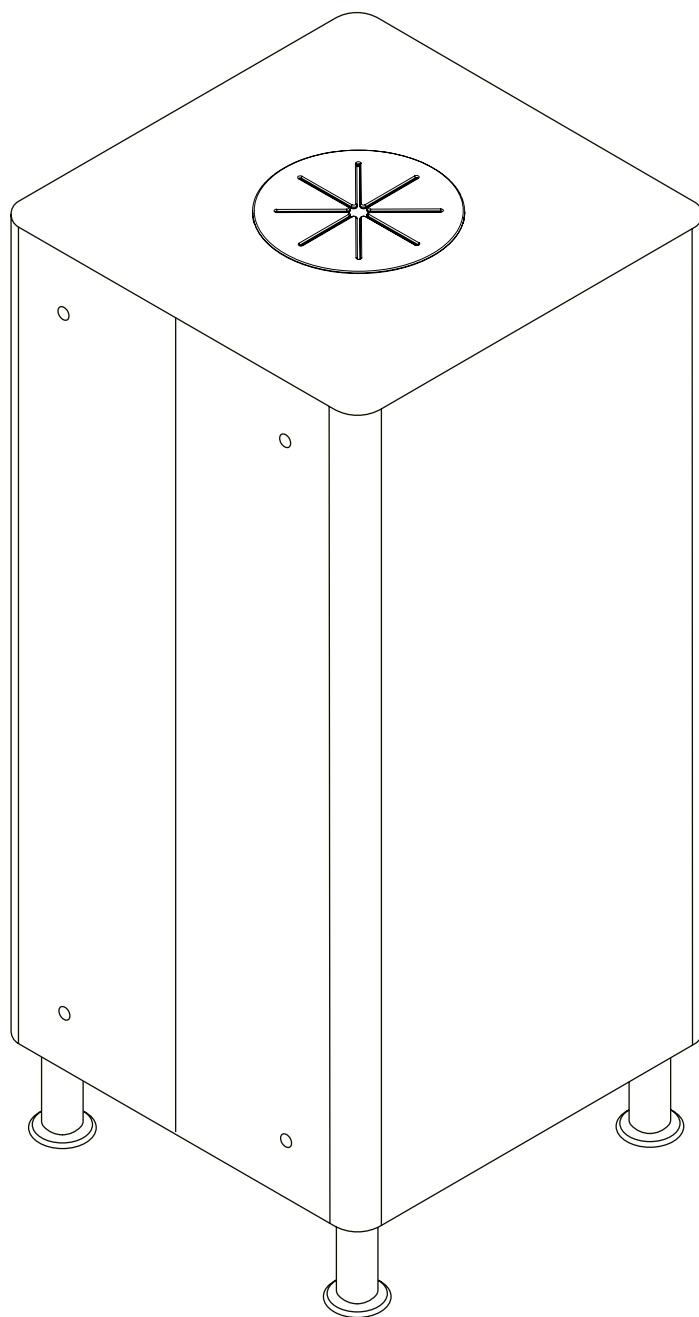
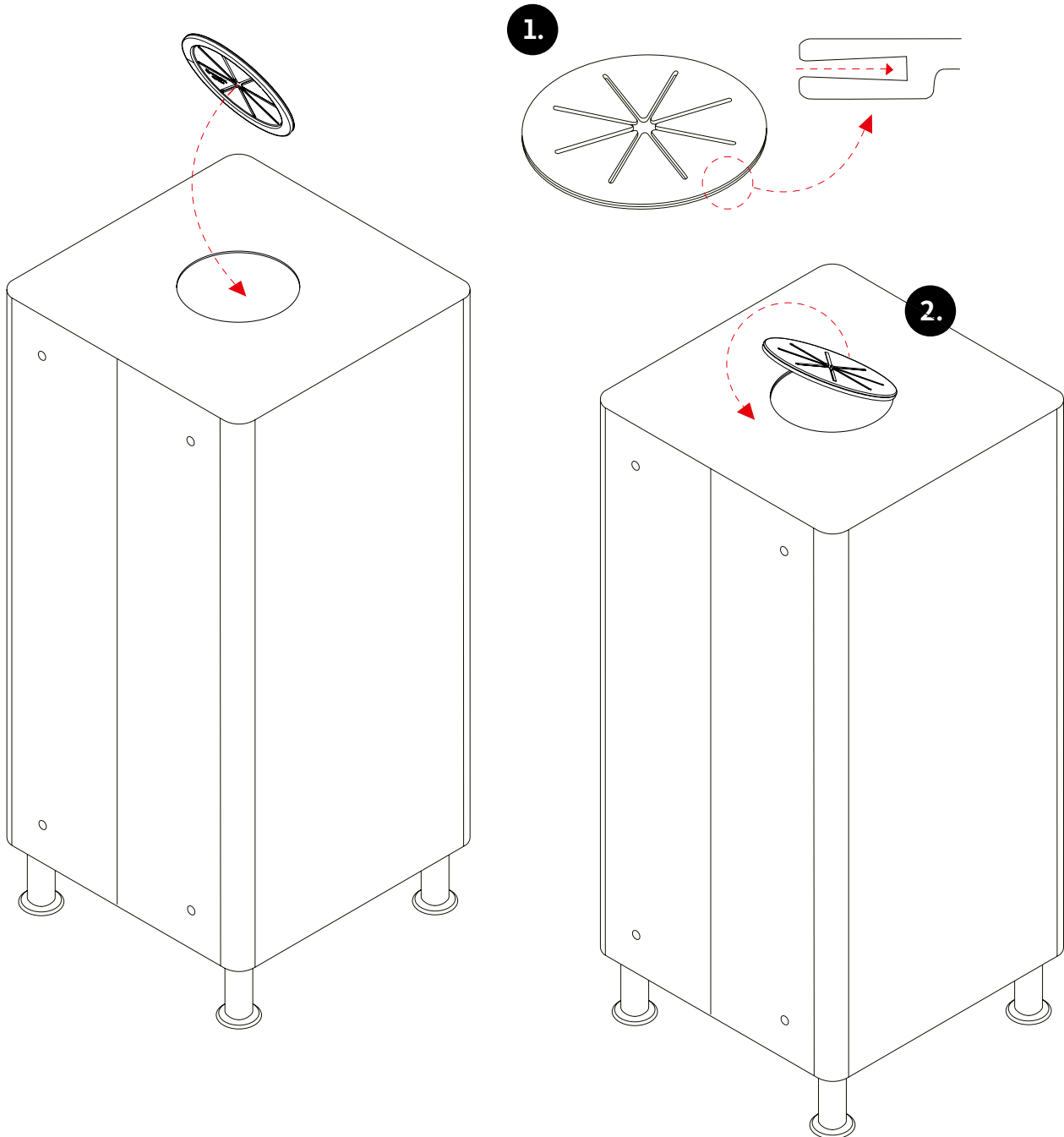


KLOSS

RUBBER INSERT



KLOSS RUBBER INSERT*



*** The rubber insert fits all KLOSS tops with Ø130 openings.**

The insert is removable for easier cleaning, use ordinary dishwashing liquid. The insert is reversible.

1. The rubber insert has a collar that is adapted to the thickness of the top.
2. Open up the collar and insert it towards the edge of the opening, secure it and continue in the same way all the way around until the insert is firmly in place.
3. For a permanent installation, glue with Loctite Super Glue. **NOTE!** cannot be removed after