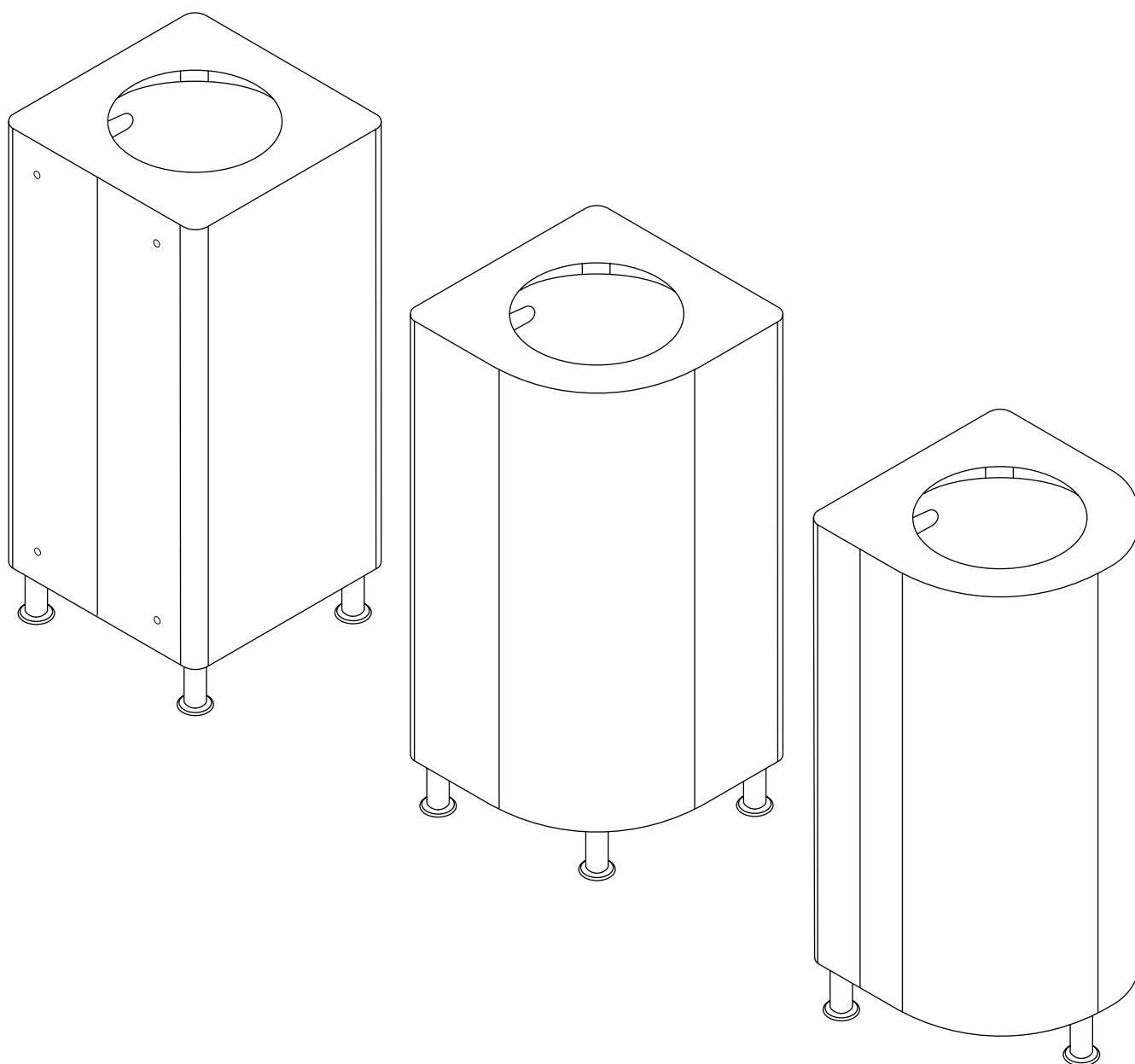
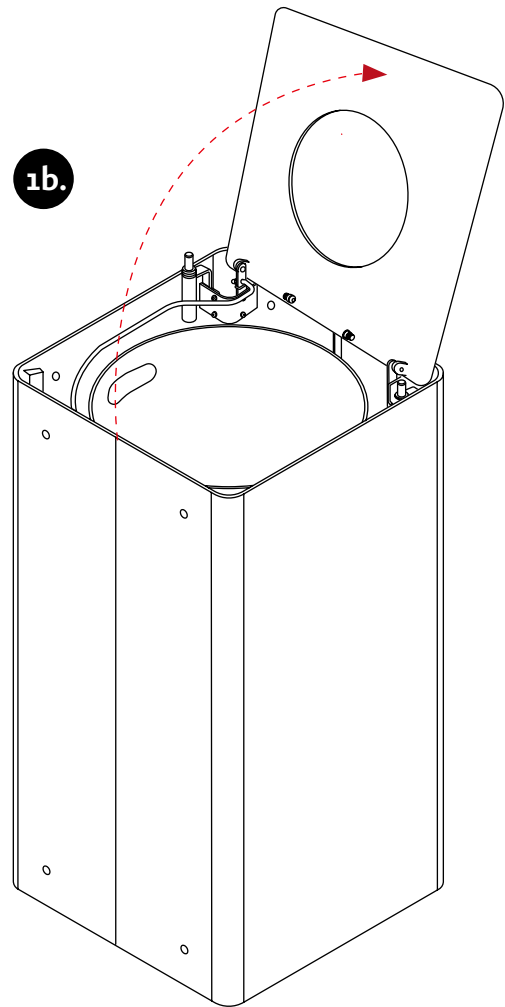
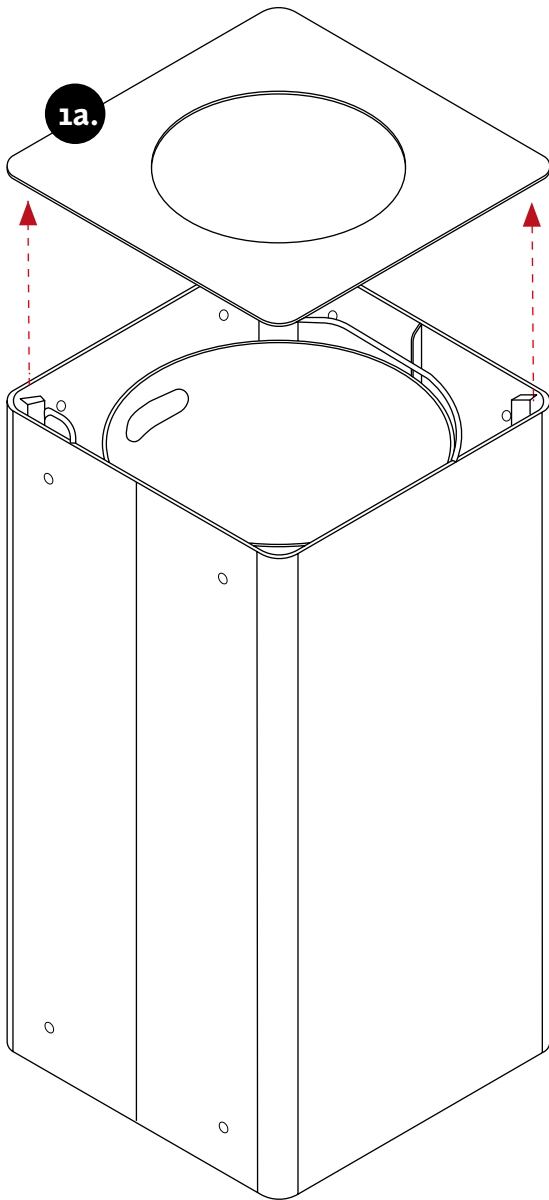


KLOSS

ASSEMBLY INSTRUCTIONS

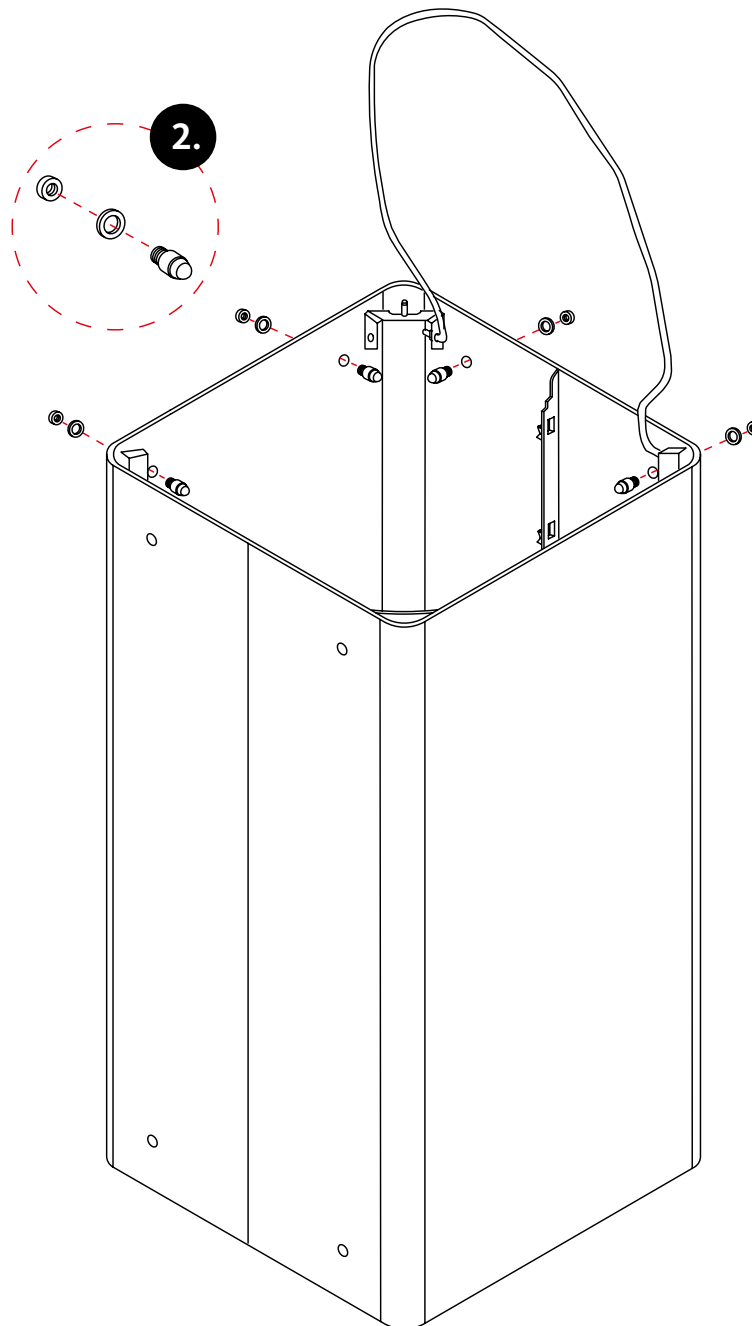


CONNECT KLOSS



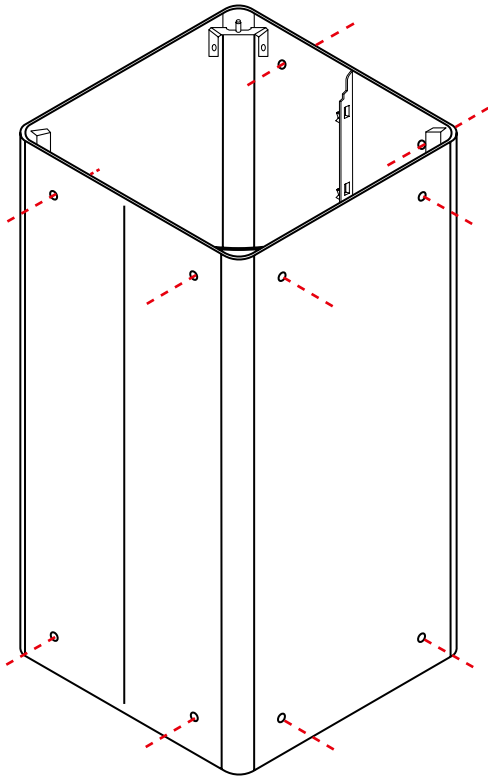
1a. Lift or **1b.** open the top and remove the container.

KLOSS CONNECTION HOLES

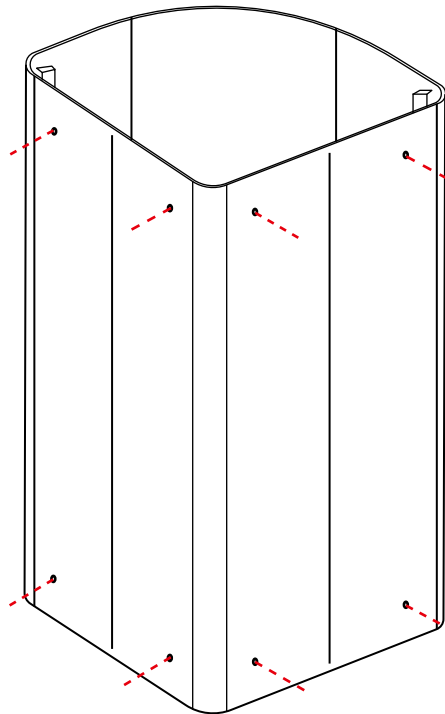


2. Assemble the frames by connecting them with screws, washers if needed and nuts in 4 connection holes in the chosen arrangement.

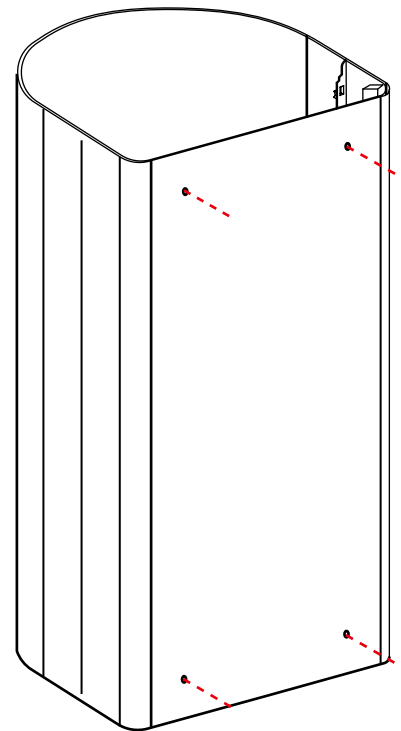
KLOSS CONNECTION HOLES



M1 - 12 pc connection holes



M2 - 8 pc connection holes



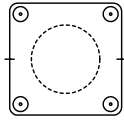
M3 - 4 pc connection holes

KLOSS are connected together with connection holes on each frame.

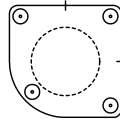
NOTE! The connection holes are included on all our frames and will be visible depending on which set you have.

KLOSS ARRANGEMENT

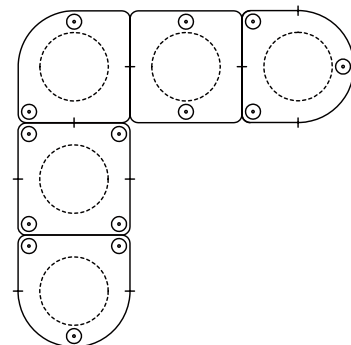
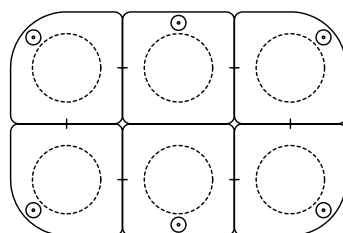
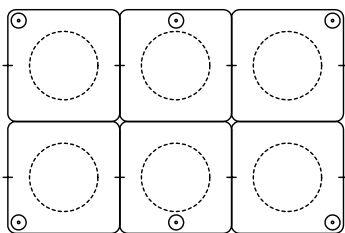
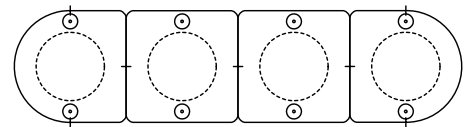
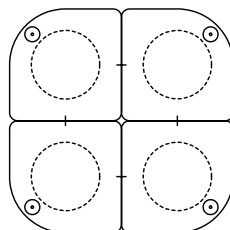
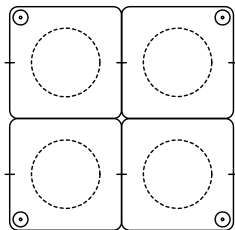
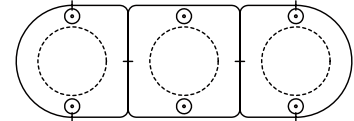
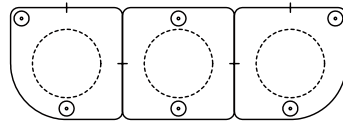
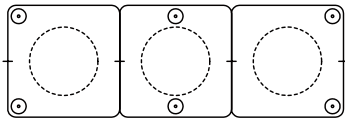
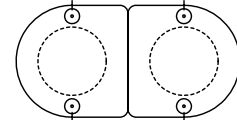
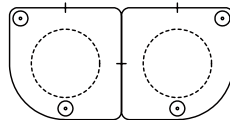
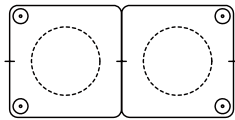
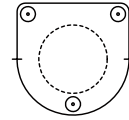
M₁



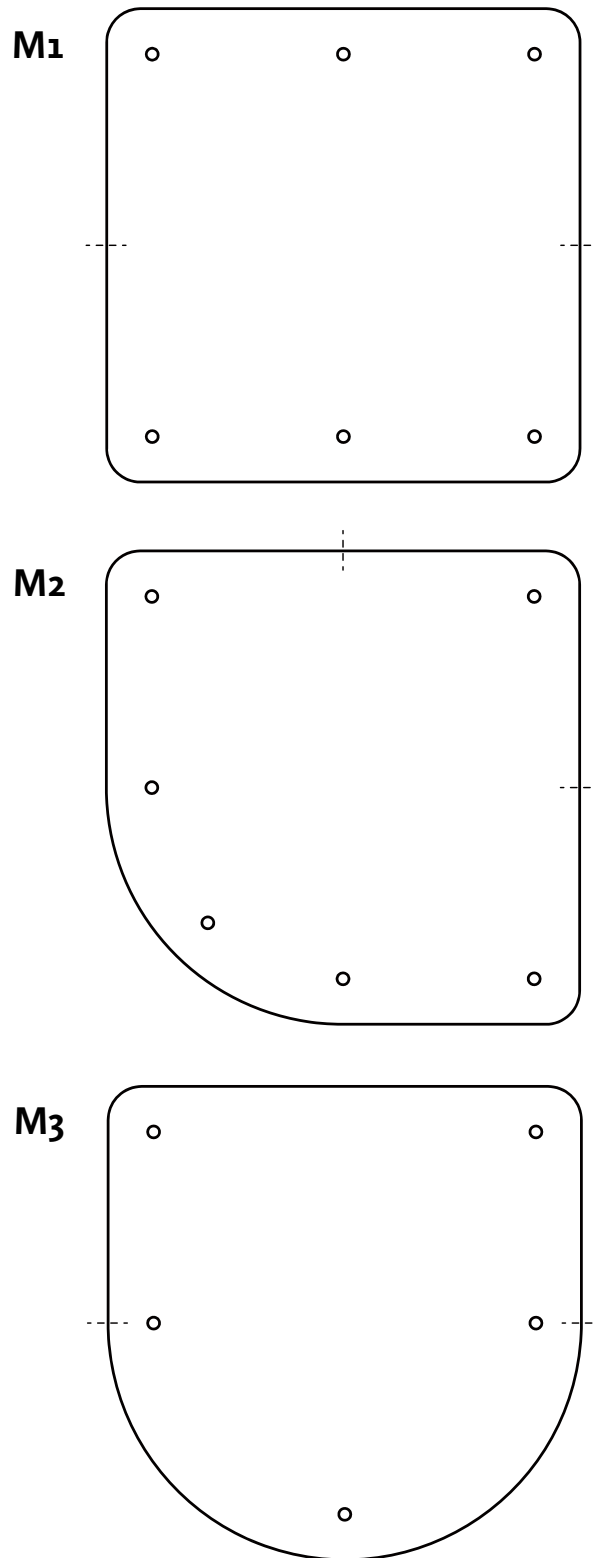
M₂



M₃

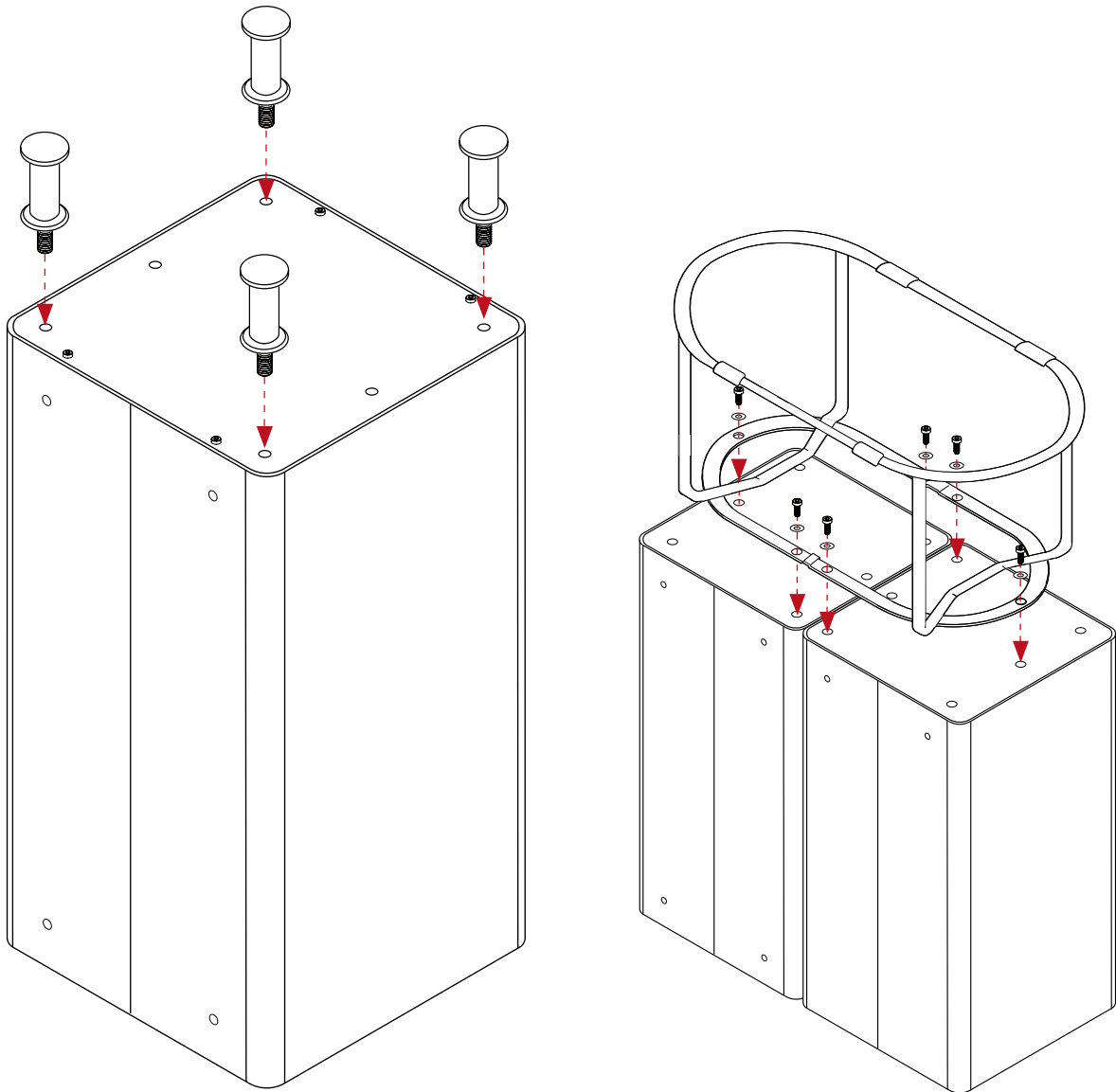


KLOSS BASE PLATE



KLOSS has three different frames therefore has three different base plates.
Connect the legs to the frame based on your Kloss arrangement.

ASSEMBLE LEGS, WHEELS AND LEGSTAND



Legs: Screw the support legs into the threaded holes in the base plate, spreading the legs over the base plate to ensure stability.

Wheels: Screw the wheels into the threaded holes in the base plate with the supplied screws, spreading the wheels over the base plate to ensure stability. Allen key included.

Leg stand: Screw the leg stand to the threaded holes with the supplied screw and nut.

Contact TreCe for disassembly instructions at info@trece.se.