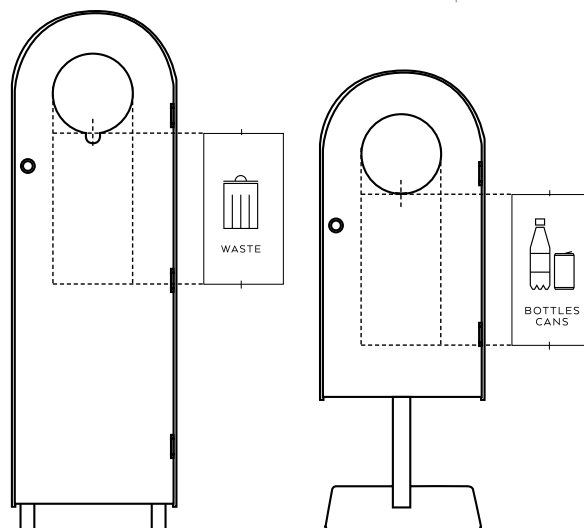
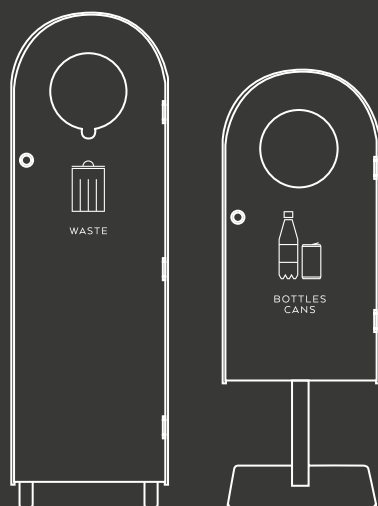


Hightower/Popsicle symbol

Assembly and Disassembly instructions

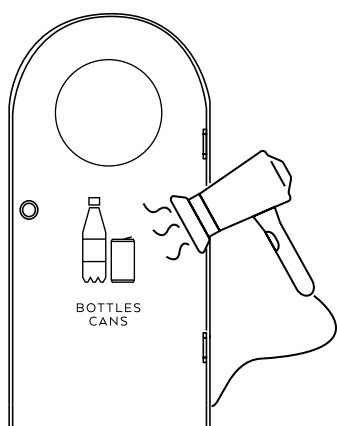


1. Clean the surface thoroughly with water and a little washing-up liquid to remove any dirt.

Wipe dry with lint-free cloth, do not use cleaning solutions containing alcohol.

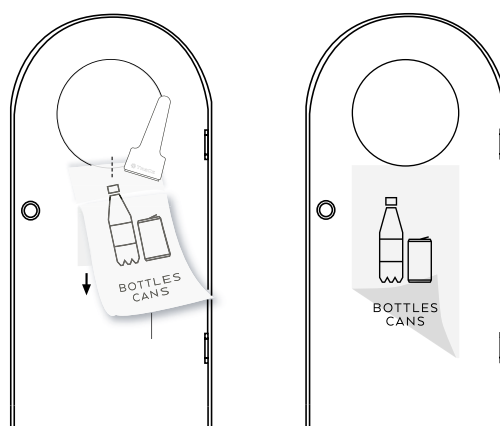


2. Fold down the symbol's protective paper and match it to the circle opening of the door so that the symbol stays in place. If the Hightower or Popsicle has a lid, lift the lid and continue as instructed.



Need to change the symbol?

1. Use a hair dryer and heat the symbol to soften it.
2. Gently pull the symbol off with your fingers or with a soft object without sharp edges.



3. Gently peel off some of the bottom protective paper and at the same time start to smooth down the top paper with the applicator.
4. When the symbol is in place gently peel off the top protective paper.
5. As a last step, it's good to additionally fix the symbol and text by placing a piece of paper and gently rubbing over the symbol and text with the applicator.



Norrköping / Huvudkontor / Showroom

Importgatan 39
P.O. Box 6063, SE-600 06 Norrköping
Ph +46 11 21 14 80
info@trece.se | www.trece.se

Stockholm / Showroom

R40 Center
Rosenlundsgatan 40
Ph +46 8 480 027 55

Gothenburg / Showroom

S8
Stampgatan 8
Ph +46 11 21 14 68

Malmö / Showroom

Djåkne 5
Djåknegatan 5
211 35 Malmö
Ph +46 11 21 14 68

Oslo / Showroom

Skøyen Designcenter
Drammensveien 130 C1,
Skøyen
Ph +47 23 96 07 22