

Space public storage

Design | TreCe



Flexible modules designed for both personal and communal storage in offices and public spaces. Space is easy to integrate thanks to its consistent and thoughtful design. Well-crafted details such as fully covered doors, shoe shelves, and benches with front panels create a seamless and stylish ambiance. This is also reflected in the sustainability of Space, as it is approved according to Möbelfakta, made from durable materials, produced with social responsibility, and quality tested at RISE.

The modules in the Space series are created to fit together, allowing your imagination to flow freely as you assemble your unique solution. Choose from various heights for frames and fronts. Frames in standard white or painted in any NCS color of your choice. Doors in painted MDF, any NCS color of your choice, oak and ash laminate with a fully covered design. Open frames such as clothing storage, benches, shoe shelves, etc., are available in painted NCS color of your choice, as well as in oak and ash laminate. Explore the entire Space series, which includes personal and communal storage, wardrobes, seating modules, cabinets, recycling units, and more.

Space comes with a standard plinth. For a different look, the plinth can be replaced with painted leg frames for an additional charge. Leg frames are available in our 11 standard colours.

Locks and Closures

We offer various types of locks and closures for our doors, such as electronic RFID locks, code locks, cabinet locks, padlock fittings, and push-to-open. For network-based locks, contact TreCe for individual advice.

Accessories

For Space storage cabinets, accessories such as movable shelves, mats, etc., are available.

Customization

Space can be customized in both material and dimensions if you wish to put your own stamp on the furniture. Contact TreCe for advice and a quote.

Reference images of our standard assortment





Dimensions: Width x Height (incl. plinth). x Depth. **Frame and front:** 16 mm. **Plinth:** 143 mm.

All doors are right-hung as standard.

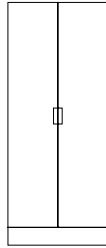
NCS refers to product lacquered in one optional NCS colour.

Wardrobe, incl. plinth

Clothes rail included



Space Wardrobe frame 1936
790x1936x470



Wardrobe frame with double doors

Name	Size	White	NCS
Space wardrobe frame 1936	790x1936x470	204110	204120
Space door pair 1790, milled out handle*	786x1790x16	-	204140
Space wardrobe shelf, fixed B758	758x19x451	205031	205041
Space double shelf movable, B758	758x19x451	201152	201153
Space double shelf, movable, shortened in front B758	758x19x381	205032	205042

* Milled metal handle, powder coated RAL 9016 white as standard. Can be lacquered in any RAL colour at extra cost.

White: White direct laminate | **NCS:** Lacquered MDF optional NCS Shelf 19 mm with laminated core

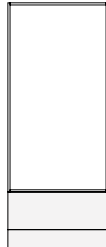
Accessories	Size	Material	Art.no
Space double carpet wardrobe	758x454	Black rubber	209028
Space wardrobe carpet, shortened in front	758x381	Black rubber	209030

Seat module without plinth, depth 487

Frame without holes in ends



Space Seat module
790x1495x487



Name	NCS	Oak	Ash
Space Seat module 1495, D487	214170	224170	234170

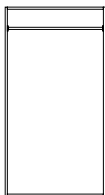
NCS: Lacquered MDF, optional NCS | **Oak:** Oak laminate | **Ash:** Ash laminate

Living with fronts.

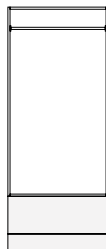
Combined with Seat bench 441 with plinth or leg stand.

Cushions and fabric are additional, contact TreCe.

Clothes storage, without plinth, depth 487



Space Clothes storage
790x11495x487



Name	NCS	Oak	Ash
Space Clothes storage 1495, D487	22260710	22260708	22260709

NCS: Lacquered MDF, optional NCS | **Oak:** Oak laminate | **Ash:** Ash laminate

Living with fronts.

Combined with Seat bench 441 with plinth or leg stand.

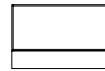


Space Seat module H1495 in combination with Seat bench H441. Seat bench completed with drawer or fixed front.



Space Seat bench H441, with place for shoe storage.

Seat bench H441, incl. plinth, depth 470



Seat bench double
790x441x470

Name	White	NCS	Oak	Ash
Space Seat bench double 441, D470	201160	201161	211160	221160

White: White direct laminate | **NCS:** Lacquered MDF optional NCS

Oak: Oak laminate | **Ash:** Ash laminate

Seat height 441 mm

Cushions and fabric are additional, contact TreCe.

Can be supplemented with drawer or fixed front, see below.

Drawer for Seat bench

Name	Size	NCS	Oak	Ash
Space drawer 296, m. reling 100%, push open	788x296x16	204072	214072	224072
Space drawer 296, w. high side 100%, push open	788x296x16	204073	214073	224073

NCS: Lacquered MDF, optional NCS

Oak: Oak laminate | **Ash:** Ash laminate

Cushions and fabric are additional, contact TreCe.



Fixed front for Seat bench H441, depth 470

Name	Size	NCS	Oak	Ash
Space Fixed front Seat bench	788x296x16	22360108	22360108	22360109

NCS: Lacquered MDF, optional NCS

Oak: Oak laminate | **Ash:** Ash laminate

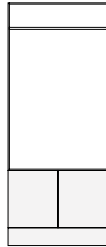
Size: Width x Height (incl. plinth). x Depth. **Frame, fronts:** 16 mm. **Plinth** height: 143 mm.

Clothes storage, without plinth, depth 487

Frame without holes in ends, clothes rail included.



Space Clothes storage
790x1345x487



Module completed with
frame H592

Name	Size	NCS	Oak	Ash
Space Clothes storage 1345, D487	790x1345x487	204080	214080	224080

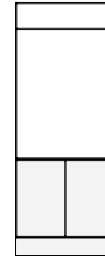
NCS: Lacquered MDF, optional NCS | **Oak:** Oak laminate | **Ash:** Ash laminate
Living with fronts.

Clothes storage, without plinth, depth 487

Frame without holes in ends, clothes rail included.



Space Clothes storage
790x1195x487



Module completed
with frame H741

Name	Size	NCS	Oak	Ash
Space Clothes storage 1195, D487	790x1195x487	204081	214081	224081

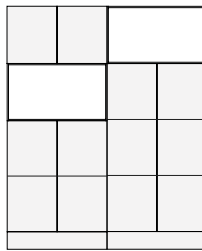
NCS: Lacquered MDF, optional NCS | **Oak:** Oak laminate | **Ash:** Ash laminate
Living with fronts.

Shelf without plinth, depth 487

Frame without holes in ends



Double open shelf
790x449x487



Proposed combination

Name	Size	NCS	Oak	Ash
Space double open shelf 449, D487	790x449x487	208095	218095	228095

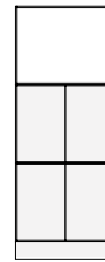
NCS: Lacquered MDF, optional NCS | **Oak:** Oak laminate | **Ash:** Ash laminate
Living with fronts.

Shelf without plinth, depth 487

Frame without holes in ends



Double open shelf
790x598x487



Module completed with
frame H1338

Name	Size	NCS	Oak	Ash
Space double open shelf 598, D487	790x598x487	208096	218096	228096

NCS: Lacquered MDF, optional NCS | **Oak:** Oak laminate | **Ash:** Ash laminate
Lives with fronts.

Seat bench

Plinth not included.
To be completed with plinth or leg stand.



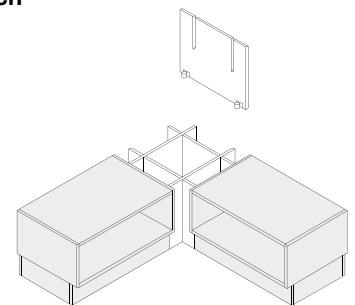
Name	Size	NCS	Oak	Ash
Space single seat bench 298	395x298x487	208092	218092	228092
Space double seat bench 298	790x298x487	208091	218091	228091
Space single shelf, movable	363x16x469	205052	215052	225052
Space double shelf, movable	758x16x469	205051	215051	225051

NCS: Lacquered MDF, optional NCS | **Oak:** Oak laminate | **Ash:** Ash laminate
Lives with fronts.
Seat height 441 mm when completed with plinth.
Cushions and fabric are additional, contact TreCe.

Accessories - Bench	Material	Size	Art.no
Space single carpet seat bench	Black rubber	363x475	209023
Space double carpet seat bench	Black rubber	758x475	209022

Corner module for Seat bench

Size: 441x530



Name	Size	White	NCS	Oak	Ash
Space corner module 441, D487	441x530	201101	201102	211101	221101

White: White direct laminate | **NCS:** Lacquered MDF optional NCS
Oak: Oak laminate | **Ash:** Ash laminate
Lives with fronts.
Cushions and fabric are additional, contact TreCe.

Size: Width x Height (incl. plinth). x Depth. **Frame, fronts:** 16 mm. **Plinth** height: 143 mm.

Space frame open, height 449 mm

Space frame without plinth



395x449x470 790x449x470

Complete frames with doors.



Frame with door Frame with double doors

Name	Size	White	NCS
Space single frame 449, without plinth	395x449x470	201182	201183
Space double frame 449, without plinth	790x449x470	201184	201185

Doors

Name	Size	NCS	Oak	Ash
Space door 446, cabinet lock	393x446x16	202121	212121	222121
Space door 446, RFID excl. lock*	393x446x16	202122	212122	222122
Space door 446, push open	393x446x16	202126	212126	222126
Space double door 446, cabinet lock	788x446x16	202151	212151	222151
Space double door 446, RFID excl. lock*	788x446x16	202154	212154	222154
Space double door 446, push open	788x446x16	202157	212157	222157

NCS: Lacquered MDF, optional NCS

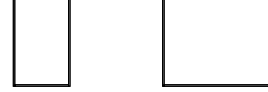
Oak: Oak laminate | **Ash:** Ash laminate

Cabinet lock: Incl. 2 keys (other locks see page 8).

* RFID lock is additional, ordered separately. Contact TreCe.

Space frame open, height 598 mm

Space frame without plinth



395x598x470 790x598x470

Complete frames with doors.



Frame with door Frame with double doors

Name	Size	White	NCS
Space single frame 598, without plinth	395x598x470	201186	201187
Space double frame 598, without plinth	790x598x470	201188	201189

Doors

Name	Size	NCS	Oak	Ash
Space door 595, cabinet lock	393x595x16	202141	212141	222141
Space door 595, RFID excl. lock*	393x595x16	202142	212142	222142
Space door 595, push open	393x595x16	202146	212146	222146
Space double door 595, cabinet lock	788x595x16	202158	212158	222158
Space double door 595, RFID excl. lock*	788x595x16	202159	212159	222159
Space double door 595, push open	788x595x16	202160	212160	222160

NCS: Lacquered MDF, optional NCS

Oak: Oak laminate | **Ash:** Ash laminate

Cabinet lock: Incl. 2 keys (other locks see page 8).

* RFID lock is additional, ordered separately. Contact TreCe.

Office shelf open, height 1936 mm

Complete frames with doors.

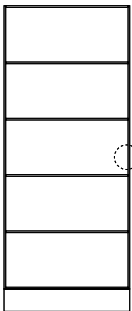


Office shelf, single with shelves

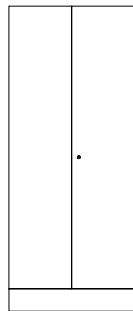


Office shelf with door

Marked shelf is fixed.
Other shelves are movable.



Office shelf, double with shelves



Frame with double doors

Office shelf incl. shelves

Name	Size	White	NCS
Space single office shelf 1936, 5 levels	395x1936x470	201191	201192
Space double office shelf 1936, 5 levels	790x1936x470	201193	201194

White: Direct laminate | **NCS:** Lacquered MDF, any NCS.

Shelves

Name	Size	White	NCS
Space single shelf movable, B363	363x16x 451	201150	201151
Space single shelf movable, indent in front edge, B363	363x16x381	205010	205020
Space double shelf movable, B758	758x19x451	201152	201153
Space double shelf movable, indent in front edge B758	758x19x381	205032	205042

White: Direct laminate | **NCS:** Lacquered MDF, any NCS.

Shelf 19 mm with laminated core

Doors

Name	Size	NCS	Oak	Ash
Space door 1790, cabinet lock	393x1790x16	204051	214051	224051
Space door 1790, RFID excl. lock*.	393x1790x16	204052	214052	224052
Space door 1790, push open	393x1790x16	204056	214056	224056
Space double door 1790, cabinet lock	788x1790x16	202161	212161	222161
Space double door 1790, RFID excl. lock*.	788x1790x16	202162	212162	222162
Space double door 1790, push open	788x1790x16	202163	212163	222163

NCS: Lacquered MDF, optional NCS

Oak: Oak laminate | **Ash:** Ash laminate

Cabinet lock: Incl. 2 keys (other locks see page 8).

* RFID lock is additional, ordered separately. Contact TreCe.

Size: Width x Height (incl. plinth). x Depth. **Frame, fronts:** 16 mm. **Plinth height:** 143 mm.
All doors are right-hinged as standard.

Shoe shelf

Plinth not included.
To be completed with plinth or leg stand.



Name	Size	NCS	Oak	Ash
Space single open shoe shelf 232	395x232x487	207092	217092	227092
Space double open shoe shelf 232	790x232x487	207091	217091	227091

NCS: Lacquered MDF, any NCS. | **Oak:** Oak laminate | **Ash:** Ash laminate
Lives with fronts.

Accessories - Shoe shelf	Material	Size	Art.no
Space single carpet shoe shelf	Black rubber	363x475	209023
Space double carpet shoe shelf	Black rubber	758x475	209022

Plinth

Name	Size	White	NCS	Oak	Ash
Space plinth, single	395x143x430	208072	208082	218072	228072
Space plinth, double	790x143x430	208071	208081	218071	228071
Space plinth, single back to back	395x143x450	208172	208182	218172	228172
Space plinth, double back to back	790x143x450	208171	208181	218171	228171

White: White direct laminate | **NCS:** Lacquered MDF, any NCS.
Oak: Oak laminate | **Ash:** Ash laminate

Top cover, thk 16mm

Name	Size	NCS	Oak	Ash
Space top cover panel single	490	207021	217021	227021

When placing modules back to back

Space top cover panel double	980	207022	217022	227022
------------------------------	-----	--------	--------	--------

NCS: Lacquered MDF, any NCS | **Oak:** Oak laminate | **Ash:** Ash laminate

Storage box open/ Plant box



Name	Size	NCS	Oak	Ash
Space single open storage 232	395x232x487	209093	219093	229093
Space double open storage 232	790x232x487	209091	219091	229091
Space single open storage 232, back to back	395x232x976	209092	219092	229092

White: White direct laminate | **NCS:** Lacquered MDF, any NCS.
Oak: Oak laminate | **Ash:** Ash laminate
Lives with fronts.

Accessories - Storage box open/Plant box	Material	Size	Art.no
Space single carpet open storage	Black rubber	363x944	209025
Space double carpet open storage	Black rubber	773x455	209024
Plastic box 19 L, planting	Transparent	446x190x354	209099

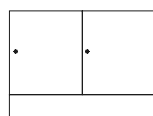
Cover panels, thk 16mm

Name	Size	NCS	Oak	Ash
<i>When placed against a wall</i>				
Space cover panel single, 592	490x592	206033	216033	226033
Space cover panel single, 741	490x741	206037	216037	226037
Space cover panel single, 823	490x823	206035	216035	226035
Space cover panel single, 973	490x970	206039	216039	226039
Space cover panel single, 1039	490x1039	206021	216021	226021
Space cover panel single, 1271	490x1271	206041	216041	226041
Space cover panel single, 1338	490x1338	206031	216031	226031
Space cover panel single, 1487	490x1487	206022	216022	226022
Space cover panel single, 1936	490x1936	206023	216023	226023

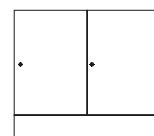
When placing modules back to back

Space cover panel double, 592	980x592	206034	216034	226034
Space cover panel double, 741	980x741	206038	216038	226038
Space cover panel double, 823	980x823	206036	216036	226036
Space cover panel double, 973	980x973	206040	216040	226040
Space cover panel double, 1039	980x1039	206521	216521	226521
Space cover panel double, 1271	980x1241	206042	216042	226042
Space cover panel double, 1338	980x1338	206032	216032	226032
Space cover panel double, 1487	980x1487	206522	216522	226522
Space cover panel double, 1936	980x1936	206523	216523	226523

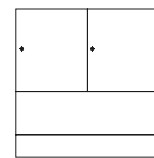
NCS: Lacquered MDF, any NCS
Oak: Oak laminate | **Ash:** Ash laminate



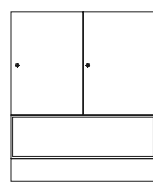
Space cover panel, 592



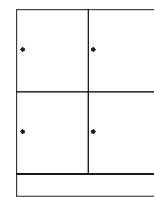
Space cover panel, 741



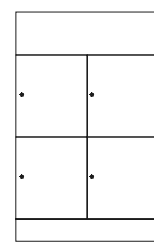
Space cover panel, 823



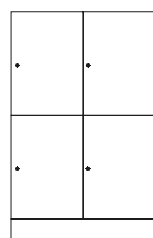
Space cover panel, 973



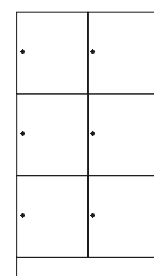
Space cover panel, 1039



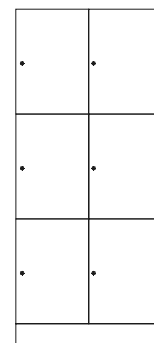
Space cover panel, 1271



Space cover panel, 1338



Space cover panel, 1487

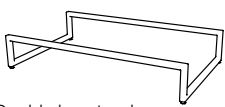


Space cover panel, 1936

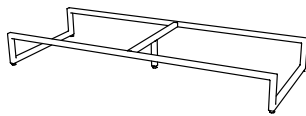
Size: Width x Height (incl. plinth). x Depth. **Frame, fronts:** 16 mm. **Plinth height:** 143 mm.
All doors are right-hinged as standard.



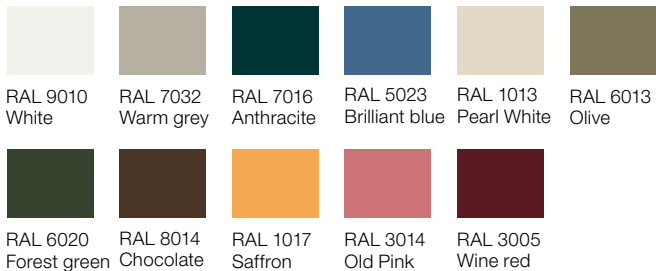
Colour



Double leg stand



Triple leg stand



Leg stand

Name	Colour	Size	Art no.
Space double leg stand	RAL 9010	789x143x469	209101
Space double leg stand	RAL 7032	789x143x469	209102
Space double leg stand	RAL 7016	789x143x469	209103
Space double leg stand	RAL 5023	789x143x469	209104
Space double leg stand	RAL 1013	789x143x469	209105
Space double leg stand	RAL 6013	789x143x469	209106
Space double leg stand	RAL 6020	789x143x469	209107
Space double leg stand	RAL 8014	789x143x469	209108
Space double leg stand	RAL 1017	789x143x469	209109
Space double leg stand	RAL 3014	789x143x469	209110
Space double leg stand	RAL 3005	789x143x469	209111
Space triple leg stand	RAL 9010	1184x143x469	209121
Space triple leg stand	RAL 7032	1184x143x469	209122
Space triple leg stand	RAL 7016	1184x143x469	209123
Space triple leg stand	RAL 5023	1184x143x469	209124
Space triple leg stand	RAL 1013	1184x143x469	209125
Space triple leg stand	RAL 6013	1184x143x469	209126
Space triple leg stand	RAL 6020	1184x143x469	209127
Space triple leg stand	RAL 8014	1184x143x469	209128
Space triple leg stand	RAL 1017	1184x143x469	209129
Space triple leg stand	RAL 3014	1184x143x469	209130
Space triple leg stand	RAL 3005	1184x143x469	209131

Space double leg stand: Steel leg stand with adjustable feet, 4 legs. Fits Space double frame. Delivered not fitted to cabinet, leg stand must be adjusted in height before cabinet is lifted on.

Space triple leg stand: Steel leg stand with adjustable feet, 5 legs (1 support leg in the middle). Fits 1x Space double frame + 1x Space single frame. Delivered not fitted to cabinet, leg stand must be adjusted in height before cabinet is lifted on.



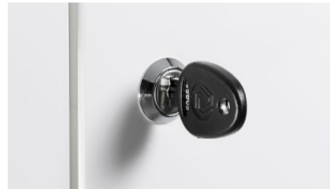
Size: Width x Height (incl. plinth). x Depth. **Frame, fronts:** 16 mm. **Plinth height:** 143 mm.
All doors are right-hinged as standard.

Master key

Name	Art.no
Master key	840913
Master key Code lock (mechanical)	890969
Master key Code lock (digital)	831099



Code lock, mechanical, for private or public use.



Padlock fittings, excluding padlocks.



RFID-locks EM or Mifare.

Alternative locks, addition

Name	Info
Code lock (mechanical)	For personal/public storage
Code lock (digital)	Available for both personal storage and public storage
RFID-lock	For personal/public storage



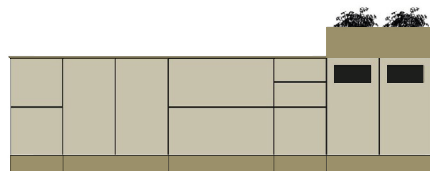
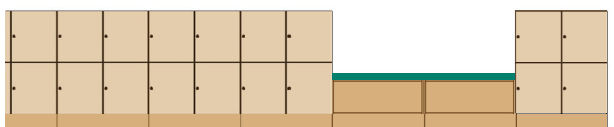
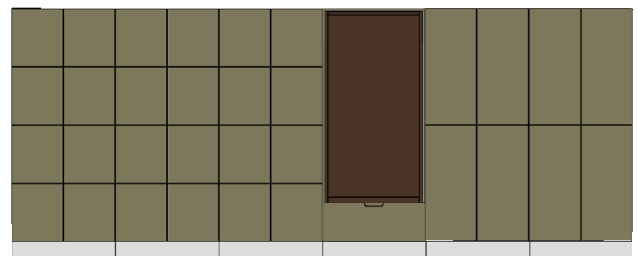
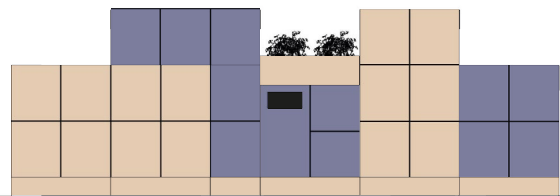
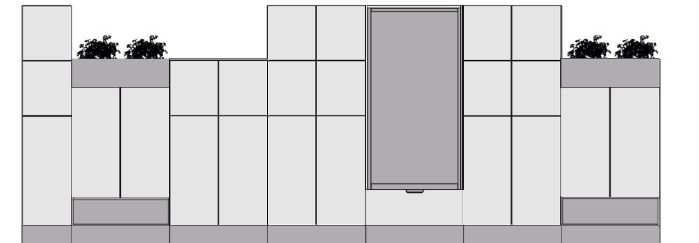
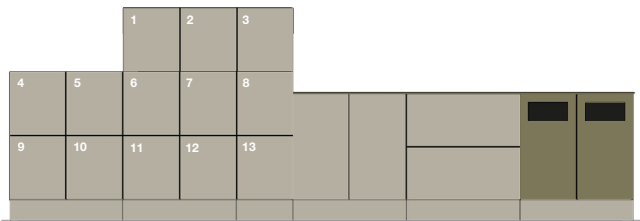
Digital code lock, black, for private or public use.



Digital code lock, silver, for private or public use.

* Contact TreCe for proximity based locks and locks as above.

Space examples of combinations



Specifications Space

Space

MFC laminated surfaces within Space have a chip core, with the exception of some shelves. Back, frame and edging strip have matching colours unless otherwise stated.

Lacquered fronts, Shoe shelf, Open shelf/Bench and Storage box open/Flower box have an MDF core. Textiles at an additional cost.

Frame incl. plinth

Thickness 16 mm, 0.8 mm straight ABS-lipping.

- MFC laminate, white.
- Lacquered, any NCS-colour.
- Double module, width 790 mm
- Single module, width 395 mm

Back

Thickness 16 mm, MFC laminate in- and out. Lacquered when choosing any NCS-colour.

Plinth

Each unit has its own setback plinth, front and rear, with 4 adjustable feet, (Plinth height 143 mm.)

Leg stand

Leg stand in steel with adjustable feet, 4 legs. Delivered not fitted to cabinet, leg stand must be adjusted in height before cabinet is lifted on.

- Leg stand double fits Space double.
- Leg stand triple fits 1x Space double + 1x Space single.
- Leg stand height 143 mm.
- Available in 11 RAL colours.

Fronts

Seamless fronts, thickness 16 mm

- Lacquered MDF, any NCS colour, oak and ash laminate.

Inside dimensions:

Space door low: W363 x H424 x D454 mm.
Space door middle: W363 x H573 x D454mm.
Space door high: W363 x H864 x D454 mm.

Drawers

Drawers have soft closing. Extension capacity of 100 %, maximum weight 35 kg.

- Drawers with railings or with elevated sides.

Doors to Space recycling units and Space counter

- With push open

Seat module with hatch door

Opens downwards with gas spring.

- Milled-in handle. Are powder coated white as standard. Can be painted in any RAL colour at an additional cost.

Cushions and fabric are additional

Shoe shelf, Open shelf/Bench and Storage box open/Flower box

Thickness 16 mm.

- Lacquered MDF, any NCS colour, oak and ash laminate.
- Modules aligned with fronts.
- Plant pot can be combined with plastic box 19 L.
- Accessories: Seat cushion

Double doors Wardrobes

With milled-in handles. Are as standard powder coated, white. It can be painted in any RAL colour at an additional cost.

Mail inlet

Powder coated steel, White (RAL 9010). Opening 290x20 mm. Mail inlet has an angled steel lip on the inside of the door.

Hinges

- Self closing concealed hinges with integrated soft closing.
- Doors are right-hung as standard.

Shelves, fixed

Shelves mounted with milled-in connection fittings that are secured with screws.

- Shelves lockers have a chip core
- Shelves for wardrobes have a lamellar wood core.

Shelves, movable for personal storage

The shelf is recessed in the front edge. Mounted with milled shelf brackets, movable according to drill division c/c 32 mm.

Shelves, movable for storage

Installed with milled shelf brackets, movable according to drill division c/c 32 mm.

- 363 - 371 mm has chip core thickness of 16 mm
- 755 mm has laminated core with pine wood thickness 19 mm, max weight 120 kg.

Cover panels/Top cover

Thickness 16 mm.

- Lacquered MDF, any NCS colour, oak and ash laminate.

Top cover in compact laminate, black core

Thickness 12 mm.

- F2255, white
- F2297, anthracite
- F5343, olive grey

Worktop in high pressure laminate

Thickness 23 mm

Formica Collection Colors

F2255, white | F2297, anthracite | F5343, olive

Pfleiderer Plain colours

R20095, Oak | R34027, Ash

Inlets for top cover, compact laminate

- Inlets square B220 x D220 mm
- Inlet custom, max. size B220 x D260 mm

Accessories

Space shelf insert, clothes rail, carpet, clothes hook, anchor hook, mirror and cork box Stuff.

Cabinet locks

Robust cabinet locks with master key system, individual lock numbers and 2 keys as standard. Identical locks are available at extra cost.

Lock types

Different types of locks and fittings are available for doors, such as electronic RFID locks, code locks, cabinet locks, padlock fittings and push-to-open. For network-based locks contact TreCe for individual advice.

General care instructions

Metal

Wipe with a slightly damp, soft lint-free cloth and mild detergent. Always wipe dry with a dry cloth. Never use solvents on painted metal nor any abrasive cleaners/ materials.

Wood

Wood is a living material and is affected for example by seasons, heat and humidity. Direct sunlight will give surfaces permanent colour and light differences. To avoid colour shifts, all surfaces should be exposed to equal amounts of light.

Normal/daily cleaning:

Dust dry and clean with mild soap solution or mild hand washing-up liquid. Wipe dry with a dry cloth. Never use strong detergents, solvents or products containing abrasives. Remove all stains as soon as possible and wipe the surface dry after cleaning.

Note! Use a minimum amount of water.

General info

Mounting

All modules are factory mounted. Worktops/ Cover panels/Top cover panels are mounted on site.

Warranty

We provide a 5 year factory warranty on Space. Other products, contact TreCe.

Contact TreCe for customisation of selected product.

QUICK INFO.

Content	Certification TreCe	Certification TreCe
Environmental, quality & social aspects	ISO 9001:2015	ISO 14001:2015
Country of manufacture	Certification Product	Approved user environments
Sweden	Möbelfakta	Offices, public spaces & schools



SVHC/ECHA's candidate list

No chemicals included in ECHA's candidate list of SVHC may be contained in levels of >0.1% by weight in the components, parts or chemicals that are included or used in the manufacturing of the furniture/product. See <http://echa.europa.eu/en/candidate-list-table>

Wood

Routines must be in place to ensure that wood based materials are traceable and come from legal and acceptable sources, see table 1.

Table 1: Requirements wood

Requirements	Complies
Has legal ownership and access rights	X
Follows nationally and locally applicable laws and regulations regarding use, environment, labour and welfare, health and safety, and other parties' rights.	X
Pays the relevant taxes and charges related to use.	X
Follows CITES regulations (only applicable to certain tree species, see the CITES website).	X
The wood complies with the requirements for formaldehyde emission requirements according to E1.	X

Metal

Fittings such as hinges, screws and handles for-fill the requirements in table 2.

Table 2: Requirements metal

Requirements	Complies
Metal that will have prolonged contact with skin (e.g. armrests) must not consist of alloys containing nickel, chromium III or chromium VI.	X

Adhesives

Adhesives used in manufacturing meet the requirements of table 3 which limit the use of environmentally and health hazardous volatile organic solvents (VOCs) and hazardous formaldehyde.

Table 3: Requirements adhesives

Requirements	Complies
Adhesives used in the manufacture of furniture or components for furniture may contain a maximum of 10% by weight VOC.	X
Adhesives used in the manufacture of furniture or components for furniture may contain a maximum of 0.2% by weight of free formaldehyde.	X

Plastic

Plastic parts such as edgings, fittings and post shelves meet the requirements in table 4.

Table 4: Requirements plastic

Requirements	Complies
Free from PVC (polyvinyl chloride)	X
Softeners/phthalates classified as hazard classification H360 have not been actively added or that the measured level does not exceed 0.1% by weight/substance and component.	X
Short-chain chlorinated paraffins (SCCPs) must not be actively added or that the measured level must not exceed 0.01% by weight/substance and component.	X
The following flame retardants have not been actively added or that the measured level does not exceed 0.1% by weight/substance and component.	X
Polybrominated biphenyls (PBBs) CAS-nr: 59536-65-1	
Decabromodiphenyl ether (dekaBDE) CAS-nr: 1163-19-5	
Pentabromodiphenylether (pentaBDE) CAS-nr: 32534-81-9	
Oktabromodiphenylether (oktaBDE) CAS-nr: 32536-52-0	
Tris (2,3-dibromopropyl) phosphate (TBPP) CAS-nr: 126-72-7	
Tris (1-aziridinyl) phosphine oxide (TEPA) CAS-nr: 5455-55-1	
Hexabromocyclododecane (HBCDD) CAS-nr: 25637-99-4	
Tris (2 chloroethyl) phosphate (TCEP) CAS-nr: 115-96-8	
No pigments containing lead, cadmium, tin, chromium VI or mercury have not been actively added or that the measured level does not exceed 0.01% by weight per component.	X

Surface treatment – white

Doors and fronts are UV-lacquered in white and meet the requirements stated in tables 5 and 6. Safety data sheets according to REACH CLP-regulation no1272/2008 are sent on request. Direct laminate products in beech, birch and oak are not surface treated.

Table 5: Requirements surface treatment

Requirements	Complies
The content of aromatic solvents / hydrocarbons in surface treatment products / preparations may not exceed 1.0% by weight.	X
Surface treatment with preparations containing VOC may have a maximum applied VOC component of 60 g / m ² for office / public / outdoor environment.	X

Table 6: Hazard class and hazard statement according to Regulation 1272/2008

Hazard category	Hazard statement according to regulation 1272/2008	Complies
Acute toxicity	H300, H301, H310, H311, H330, H331	X
Toxic to body organs	H370, H371, H372, H373	X
Carcinogenic	H350, H351	X
Mutagenic	H340, H341	X
Toxic for reproduction	H360, H361, H362	X
Allergenic	H334	X
Dangerous to the environment	H400, H410, H411, H412, H413 If the use of surface treatment products is required for technical reasons, products labelled as dangerous to the environment (H400, H410, H411, H412, H413) may be acceptable if the content of environmentally hazardous substance <14 g/per m ² of surface.	X
Hazardous to the ozone layer	H420	X

The production

Space is manufactured and assembled in Sweden. Environmental aspects related to production are presented in table 7.

Table 7: The environmental aspects of production

Environmental aspect	
Environmentally classified materials / chemicals	Particularly hazardous chemicals, phasing out substances or priority risk reduction substances are not used. Handling and storage of all chemicals and substances are regulated so emissions to air, ground or water do not occur.
Surface coating	During the surface coating the production works actively to minimise the environmental impact through special handling and environmentally adapted colors and solvents. For example excess paint is collected and reused.
Emissions air	Emissions below the set license conditions. An air filter cleaner is installed that recycles tempered air which saves energy and reduces emissions to the outdoor environment.
Emissions water	Emissions below the set license conditions. Substances that are discharged into wastewater are environmentally friendly and contain no chemicals that the treatment plants cannot handle. Adhesives and varnishes that according to the safety data sheet are considered to pose a risk when released into water are collected in sealed containers and classified and treated as dangerous waste.
Waste	Residual material from particleboard is baled and collected for combustion in order to extract energy. TreCe is connected to the Packaging and Newspaper Collection (FTI). Waste is sorted according to the regulations that are based on the FTI and current legislation. Waste and residual products such as glue and oil residues are handled and collected separately.
Energy	In order to minimise energy consumption, heating is regulated based on working hours and which workstations are staffed. Investment in a compressor for a sustainable use of electricity resulted in an energy reduction of about 110,000 kWh/year.
Production optimization	The production process is optimised to save on materials, resulting in a reduced amount of waste, and to minimise energy consumption.
Energy per product	The energy consumption in electricity per product is 8.8 kWh.

The product

Environmental aspects linked to the product in addition to the materials are presented in table 8.

Table 8: The products aspects

Aspect	
Packaging	Stretch film and corrugated board used to pack TreCe products are free of chlorine and bleach. The box is glued with wheat or cornstarch.
Reuse and restoration	One of our core values is Smart design. This means, among other things, that we look at design from a wider perspective. TreCe products are long lasting. Instead of replacing the whole piece of furniture, there is the option of replacing only a few parts. In this way, our products become sustainable in the long term — a benefit for both you as a user and for the environment.
Lifetime and warranty	TreCe provides a 5-year warranty on the entire range and spare parts are available for 10 years. The estimated usage life is from 5 years up to 30 years, depending on the area of use.
Recycling	Material recycling leads to a reduction in virgin material extraction and thus reduces carbon dioxide emissions. Hinges and fittings can be melted down and wood-based materials can be recycled for the production of new chipboard which is almost as high quality as virgin. The materials are submitted to recycling facilities, contact your municipality for more information. CombiLine is designed so that the different materials can be separated without special tools. When dismantling, no environmentally hazardous emissions occur.

Social responsibility

We have ensured that this product is manufactured under good conditions, ie. with regard to social and ethical issues such as working conditions, human rights, labour, environment and corruption. We have sent these requirements to our suppliers and subcontractors, who have each certified that they are followed. A summary is shown in table 9 and applies to the entire manufacture process of a product and its components. The starting point is the UN guidelines on the "Code of Conduct" and Möbelfakta's requirements for Social Responsibility are formulated on the basis of the UN's Global Compact. As well as conditions for social and ethical considerations regarding tax irregularities and illegal labour. The principles are based on below;

- UN Universal Declaration of Human Rights
- Rio Declaration on Environment and Development
- International Labour Organization (ILO) eight core conventions on human and labour rights
- UN Convention against Corruption
- Work environment requirements based on ILO conventions on health and safety

Table 9: Summary requirements for social responsibility

Requirements		Complies
Legislation	The furniture and its components must be manufactured in accordance with national legislation.	X
Human Rights	Producers, manufacturers and suppliers operations must comply with human rights.	X
Working conditions	Wages, child labour, conditions of employment, working hours, benefits, penalties, freedom of association, forced labour and discrimination.	X
Working environment	The company must constantly strive to improve the working environment and workplace safety for its employees.	X
Environment	Identify environmental impact, work actively with environmental issues and involve staff. Procedures for law compliance must be in place and followed up.	X
Anti-corruption	No form of extortion, corruption, bribery or favoritism to or from employees or organizations is tolerated.	X
Tax irregularities /fraud	In addition to the statutory obligations applicable to the employees concerned, shall also anti-labour and tax fraud are applied, such as illegal workers.	X
Undeclared/illegal labour	No undeclared/illegal labour shall be hired to preform product manufacturing.	X

Quality

This product has undergone extensive quality tests for safety and function, as well as surface resistance. The criteria and standards apply to the public environment, school environment and office environment and are shown in tables 10 and 11. The tests were conducted by RISE, a Swedish government research institute that performs testing and certification.

Table 10: Approved user environments

Product	Approved user environments	Complies
Space-products with Möbelfakta label	Public environment	X
	School environment	X
	Office environment	X

Table 11: Standards against which the product has been tested and approved

Standard	Scope	Complies
SS-EN 14073-2:2004	Office furniture — Storage furniture — Part 2: Safety requirements	X
SS-EN 16121:2013 + A1:2018	Non-domestic storage furniture — Requirements for safety, strength, durability and stability	X
SS-EN 12720:2009 + A1:2013 SS 839117	Surface resistance Public environment / office	X